

AWDis



Blank Essentials

2025

OUR COLORS

01	02	03	04	05
French Navy	Oxford Navy	Royal Blue	Sapphire Blue	Hawaiian Blue
06	07	08	09	10
Airforce Blue	Cornflower Blue	Sky Blue	Seafoam	Peppermint
11	12	13	14	15
Mint	Jade	Bottle Green	Kelly Green	Lime Green
16	17	18	19	20
Dusty Green	Earthy Green	Olive Green	Hot Chocolate	Caramel Toffee
21	22	23	24	25
Mocha Brown	Desert Sand	Natural Stone	PFD (Prepared for Dye)	Nude
26	27	28	29	30
Peach Sorbet	Vanilla Milkshake	Sherbet Lemon	Sun Yellow	Mustard
31	32	33	34	35
Gold	Orange Crush	Burnt Orange	Red Hot Chilli	Fire Red
36	37	38	39	40
Burgundy	Dusty Lilac	Purple	Magenta Magic	Lavender
41	42	43	44	45
Hot Pink	Dusty Pink	Baby Pink	Jet Black	Steel Grey





ESSENTIALS

JHA001	College Hoodie	page 13
JHA074	Tapered Track Pant	page 13
JTA001	AWDis T	page 16
JHA030	College Sweat	page 19
JHA080	Campus Shorts	page 20
JHA050	College Zoodie	page 22
JHY001	Youths College Hoodie	page 24
JHY030	Youths College Sweat	page 25
JHA101	Urban Heavyweight Hoodie	page 28

COLLEGIATE

JHA003	Varsity Contrast Hoodie	page 33
JHY043	Youths Letterman Jacket	page 34
JHA043	Letterman Jacket	page 35
JHA046	Sophomore 1/4 Zip Sweat	page 36
JHA009	Baseball Hoodie	page 37

FASHION

JHA021	Cross Neck Hoodie	page 41
JHA011	Epic Print Hoodie	page 42
JHA014	Camo Hoodie	page 43
JHA017	Surf Hoodie	page 44
JHA004	Electric Hoodie	page 46
JHY004	Youths Electric Hoodie	page 46
JHA035	Women's Cropped Sweat	page 48
JHA016	Women's Cropped Hoodie	page 49

PERFORMANCE

JCA001	AWDis Cool T	page 52
JCA002	Long Sleeve Cool T	page 54
JCY001	Youths Cool T	page 55

COLOR GUIDE	page 56
FABRIC GUIDE	page 58
PRINT GUIDE	page 59
FIT GUIDE	page 60
INTERNATIONAL FIT GUIDE	page 61

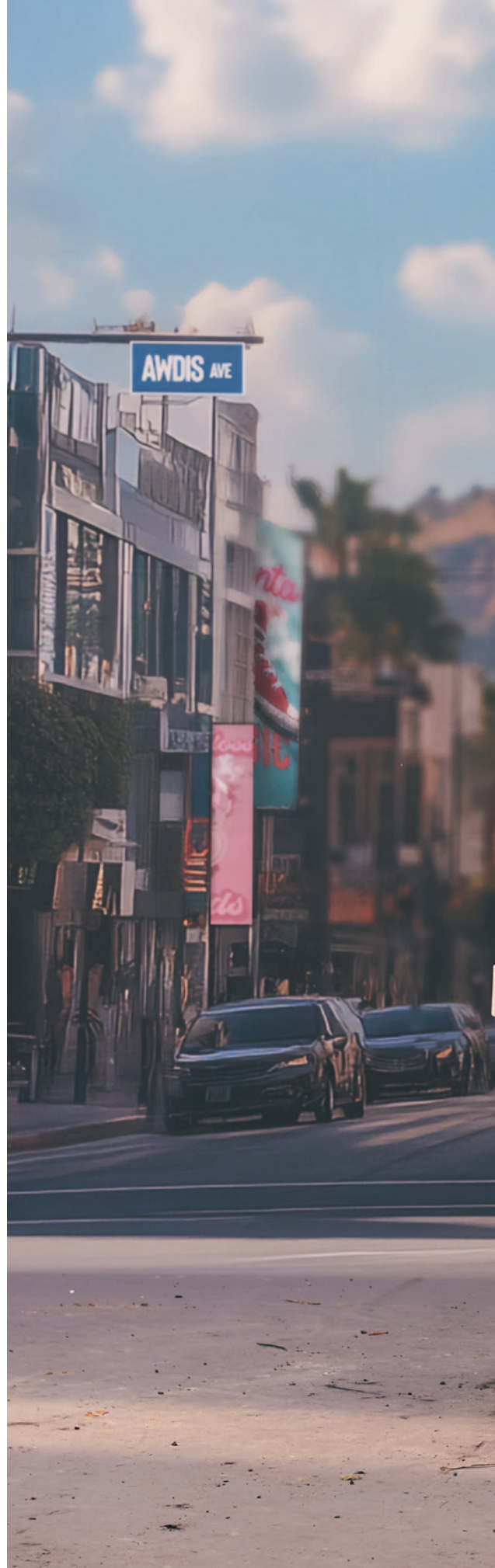
WE ARE AWDIS

OUR STORY

Established in the USA in 2017, we're a one stop shop for fashion led basics and customizable apparel. Whether it's individuals marking special moments, crafting unique brands, or forming tight-knit sports clubs and teams, AWDiS stands as a reliable partner. We cater to schools and educational campuses, teams, and even large corporations — because expressing identity knows no bounds when AWDiS is in the picture.

OUR PRODUCTS

The offering of color, quality and printability in our blanks means we continue to provide endless possibilities. From college and university to sports and casual wear, we've got something for every occasion.





WHY CHOOSE AWDIS

Doing the right thing runs through the heart of everything we do, and that's why we work so closely with our global partners to do what we can to make the world a better place. In 2022, we removed all virgin plastic from our packaging and replaced it with 100% recycled bags. In 2023, we went a step further and removed 80% of our packaging completely. Where we couldn't remove packaging, we transferred to 100% certified compostable bags, reducing our environmental impact significantly.

At the heart of our ethos lies the values of family and community. Our product range is designed to allow for expression of identity, giving our customers the canvas to push and explore the boundaries of creativity.

ALL WE DO IS...**CARE**

WHO WE ARE.

At AWDIs we pride ourselves on helping to reduce the harmful impact the apparel industry has on our planet, continually striving to be a low carbon supplier of garments. We are the original market innovators, and our mission is to innovate with care, putting people at the center of our business and always being one step ahead of the ever-changing landscape within the sector.

REDUCING WATER USAGE

Ensuring they use the latest technologies our production has reduced water consumption during the dyeing and finishing process by over **50% per garment.**

Any excess water is processed through a state of the art effluent water treatment plant before being released in a sustainable manner.



90%

OF OUR PRODUCTION

comes from our longterm global supply partners who have been with us since the beginning of AWDIs, 15+ years ago.

WATER TREATMENT

Water treatment at the fabric and dyeing stage of production is also a key concern for us.

The apparel manufacturing process uses water for dyeing, washing and printing textiles. This inevitably generates water-based toxic waste, or effluent.

Our waste water is treated so that it can be released back into the environment, with no environmental impact.



Since 2021

we have reduced our plastic packaging as much as possible, while still ensuring your garments reach you in tip top condition.

From 2023 over 80% of our garments will be packed with no plastic at all with the remaining light colors packed in one certified compostable blister bag, reducing our reliance on fossil fuels and impact to the environment.

OUR PROCESSES

OPERATING PRINCIPLES

At **AWDis** we pride ourselves on helping to reduce the harmful impact the apparel industry has on our planet. We strive to use the latest innovations in sustainable fabric technology and manufacturing processes to deliver high-quality, high-performance products delivered with integrity.

We only partner with factories that meet our high standards and commitment across human resources management, health and safety, environmental practices, legal compliance, security standards and local laws.

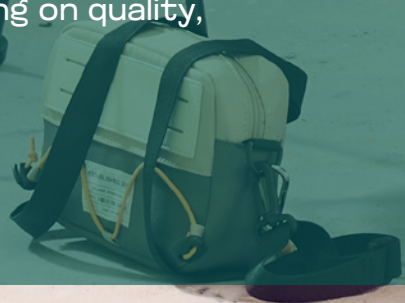




ESSENTIALS

Explore our Essentials range, where simplicity and style is key. This selection of products have been crafted to meet the demands of everyday, focusing on quality, functionality and being print ready.

JHA050 Royal Blue **Page 22**
JHA001 Airforce Blue **Page 13**







Cornflower Blue

Desert Sand

1*	2*	3*	4	5	6	7	8	9	10	12	13*	14	15	16	17	18	19	20	21	22	23	24	25	27
28	29	30	31	32	33	34	35*	36*	37	38	39	40	41	42	43	44*	45	46	47*	88	89*	90	91*	92

* Only certain colors are available in 4XL and 5XL



JHA001

COLLEGE HOODIE

Sizes
S | M | L | XL | XXL | 3XL | 4XL | 5XL*

- Key Features**
- 50 great colors
 - 100% cotton faced fabric for superior printability
 - Relaxed fit

Specification
80% Ringspun Cotton /
20% Polyester*

Fabric Weight
8.3oz

* Heather grey, charcoal and smoke color fabrications may vary

JHA074

TAPERED TRACK PANT

Sizes
S | M | X | XL | XXL | 3XL

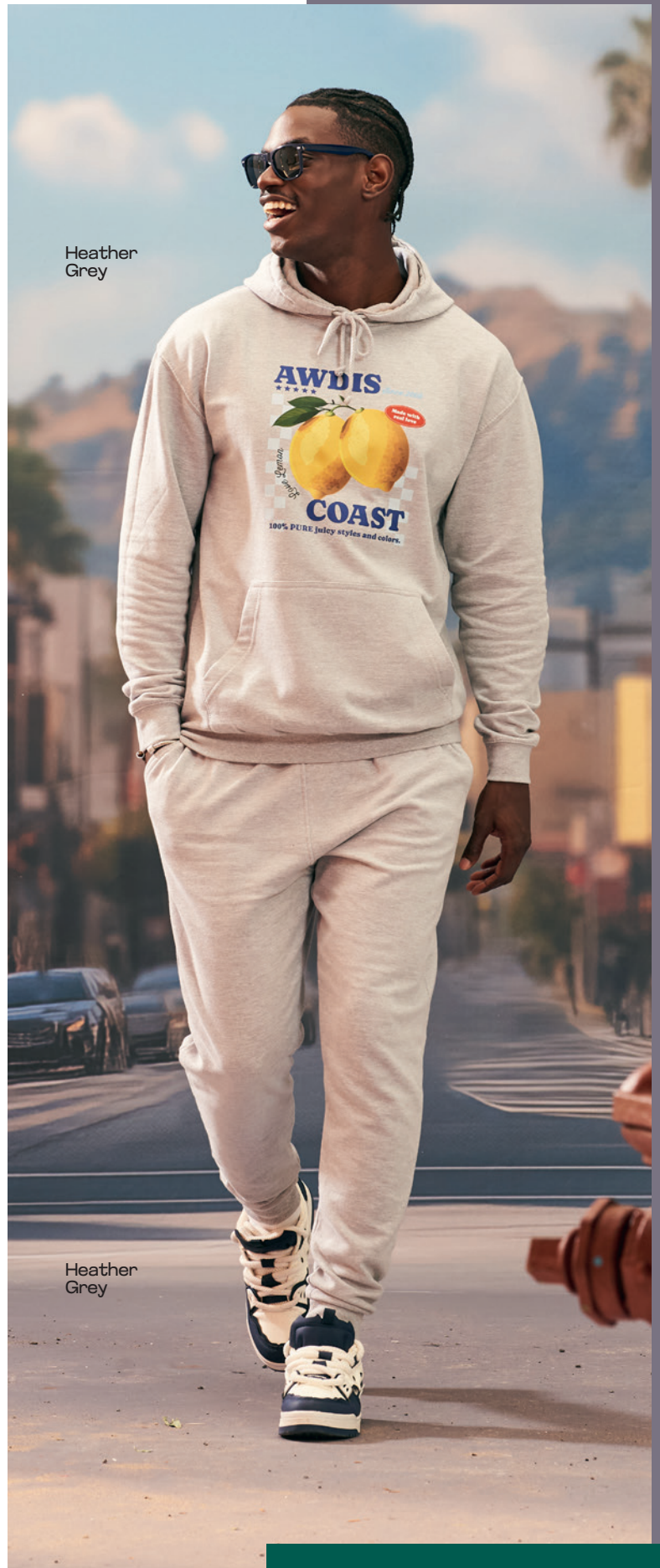
- Key Features**
- Tapered slim fit
 - Brushed inner fleece
 - 100% cotton faced fabric for superior printability

Specification
80% Ringspun Cotton /
20% Polyester*

Fabric Weight
8.3oz

2 44 89

* Heather grey fabrications may vary



Heather Grey

Heather Grey



**WE ARE
COLOR**





Lavender

Moondust Grey

JTA001

AWDIS T

Sizes

XS | S | M | L | XL | XXL | 3XL | 4XL | 5XL*

Key Features

- Relaxed fit
- Side seams
- 26 singles

Specification

100% Combed Ringspun Cotton*

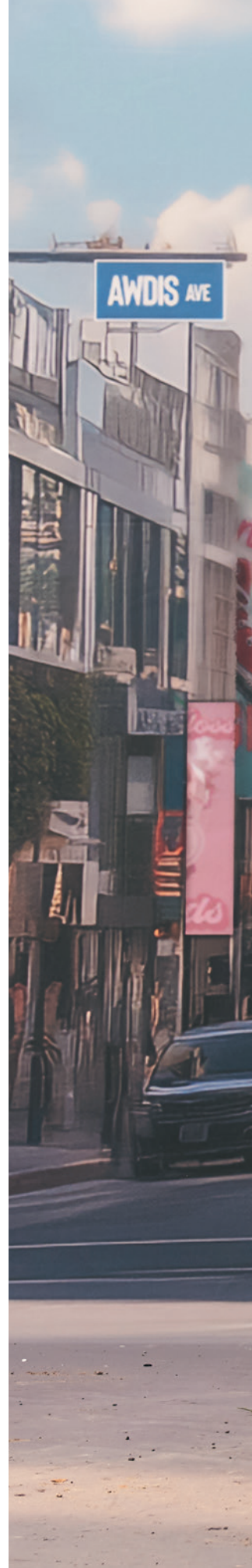
Fabric Weight

5.3oz



* Only certain colors are available in XS, 4XL and 5XL

* Heather grey and charcoal fabrications may vary



JHA001
Seafoam
Page 13

Seafoam



Orange
Crush

Jade





Dusty Lilac

JHA030

COLLEGE SWEAT

Sizes

S | M | L | XL | XXL | 3XL | 4XL | 5XL*

Key Features

- Relaxed fit
- 100% cotton faced fabric for superior printability
- 50 great colors

Specification

80% Ringspun Cotton / 20% Polyester*

Fabric Weight

8.3oz

1	2*	3	4	5	6	7	8	9	10	12
13	14	15	16	17	18	19	20	21	22	23
24	25	27	28	29	30	31	32	33	34	35
36	37	38	39	40	41	42	43	44*	45	46
47	88	89*	90	91	92					

* Only certain colors are available in 4XL and 5XL

* Heather grey, charcoal and smoke color fabrications may vary

JHA001
Royal Blue
Page 13

JCA001
Royal Blue
Page 52

Heather
Grey

JHA080

CAMPUS SHORTS

Sizes

S | M | L | XL | XXL | 3XL

Key Features

- Side Pockets
- Single back patch pocket
- Relaxed fit

Specification

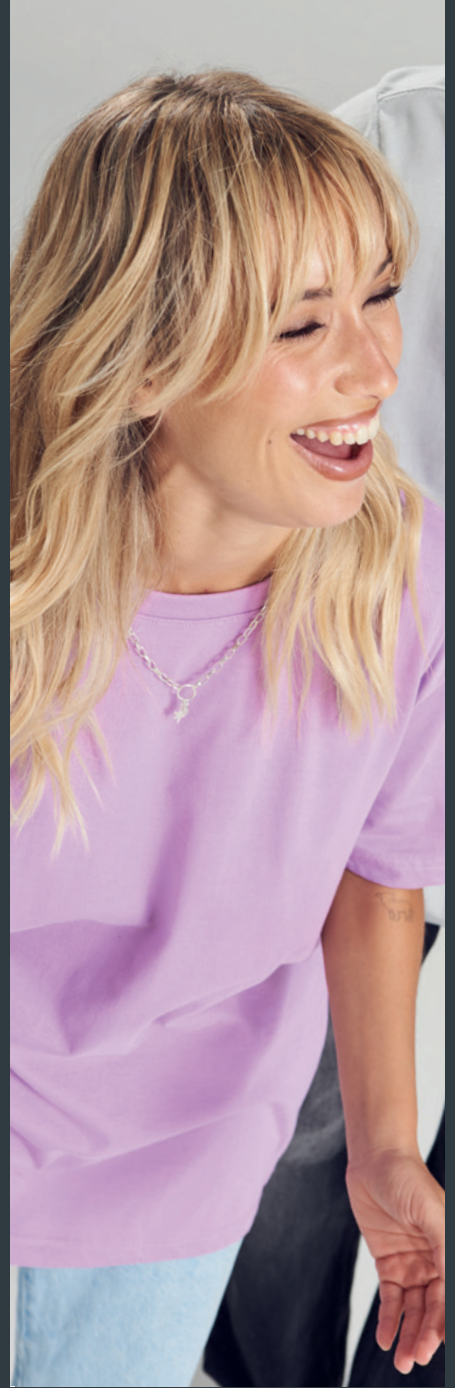
80% Ringspun Cotton / 20% Polyester*

Fabric Weight

8.3oz

44 89

* Heather grey fabrications may vary



TRENDING

STYLES



Royal
Blue

Heather
Grey

JHA050

COLLEGE ZOODIE

Sizes
S | M | L | XL | XXL | 3XL

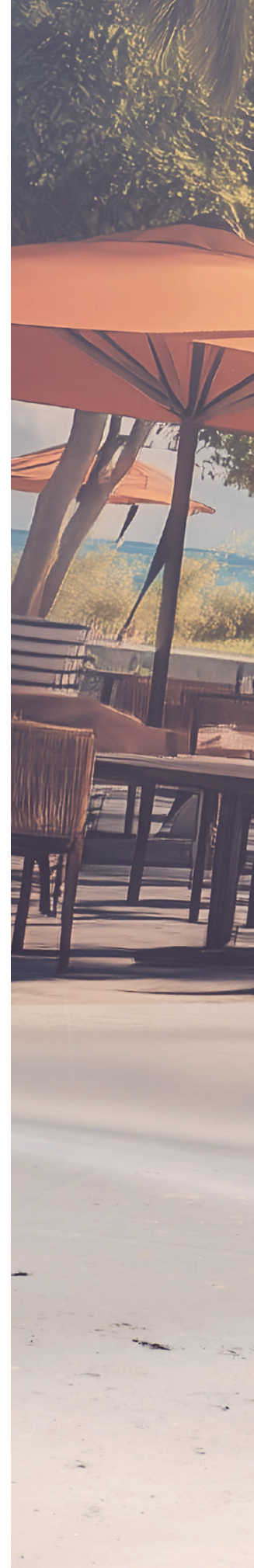
- Key Features**
- Self-fabric covered YKK zip
 - 100% cotton faced fabric for superior printability
 - Self-colored round drawcords

Specification
80% Ringspun Cotton / 20% Polyester*

Fabric Weight
8.3oz

2 3 35 36 44 89 91

* Heather grey and charcoal fabrications may vary





Royal Blue

JHA001
Airforce Blue
Page 13

JTA001
Orange Crush
Page 16

JHY001

YOUTHS COLLEGE HOODIE

Sizes

XS | S | M | L | XL

Key Features

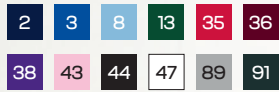
- No drawcords
- 100% cotton faced fabric for superior printability
- Double fabric hood

Specification

80% Ringspun Cotton / 20% Polyester*

Fabric Weight

8.3oz



* Heather grey and charcoal fabrications may vary



Fire Red

Heather Grey



JHY030

YOUTHS COLLEGE SWEAT

Sizes

XS | S | M | L | XL

Key Features

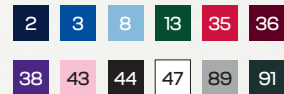
- Ribbed crew neck
- 100% cotton faced fabric for superior printability
- Brushed inner fleece

Specification

80% Ringspun Cotton /
20% Polyester*

Fabric Weight

8.3oz



* Heather grey fabrications may vary

THE COLOR EDIT





**CHOOSE
YOUR COLOR.
CHOOSE
YOUR STYLE.**



JHA101

URBAN HEAVYWEIGHT HOODIE

Sizes

S | M | L | XL | XXL | 3XL | 4XL | 5XL*

Key Features

- Heavy 10oz fabric
- 100% cotton faced fabric for superior printability
- 3 panel self-fabric hood

Specification

70% Ringspun Cotton / 30% Polyester*

Fabric Weight

10oz

2*	3	8	13	22	23	35
36	37	43	44*	47	89*	91*

* Only certain colors are available in 4XL and 5XL

* Heather grey and charcoal are available up to a 5XL

Royal Blue



AWDIS AVE

Baby Pink

HEAVY
10
OZ
FABRIC



COLLEGIATE

This is the ultimate destination for collegiate fashion!
Our selection of products lets you showcase your unique
style while connecting with your campus community.
Versatile, printable pieces to wear for any event.

JHA043 Jet Black / Fire Red **Page 35**

JHA003 Heather Grey / Fire Red **Page 33**





French Navy /
Heather Grey

Heather Grey /
French Navy



JHA003

VARSITY CONTRAST HOODIE

Sizes

S | M | L | XL | XXL | 3XL

Key Features

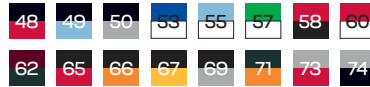
- Contrast lined hood
- 100% cotton faced fabric for superior printability
- Contrast flat lace drawcords

Specification

80% Ring spun Cotton / 20% Polyester*

Fabric Weight

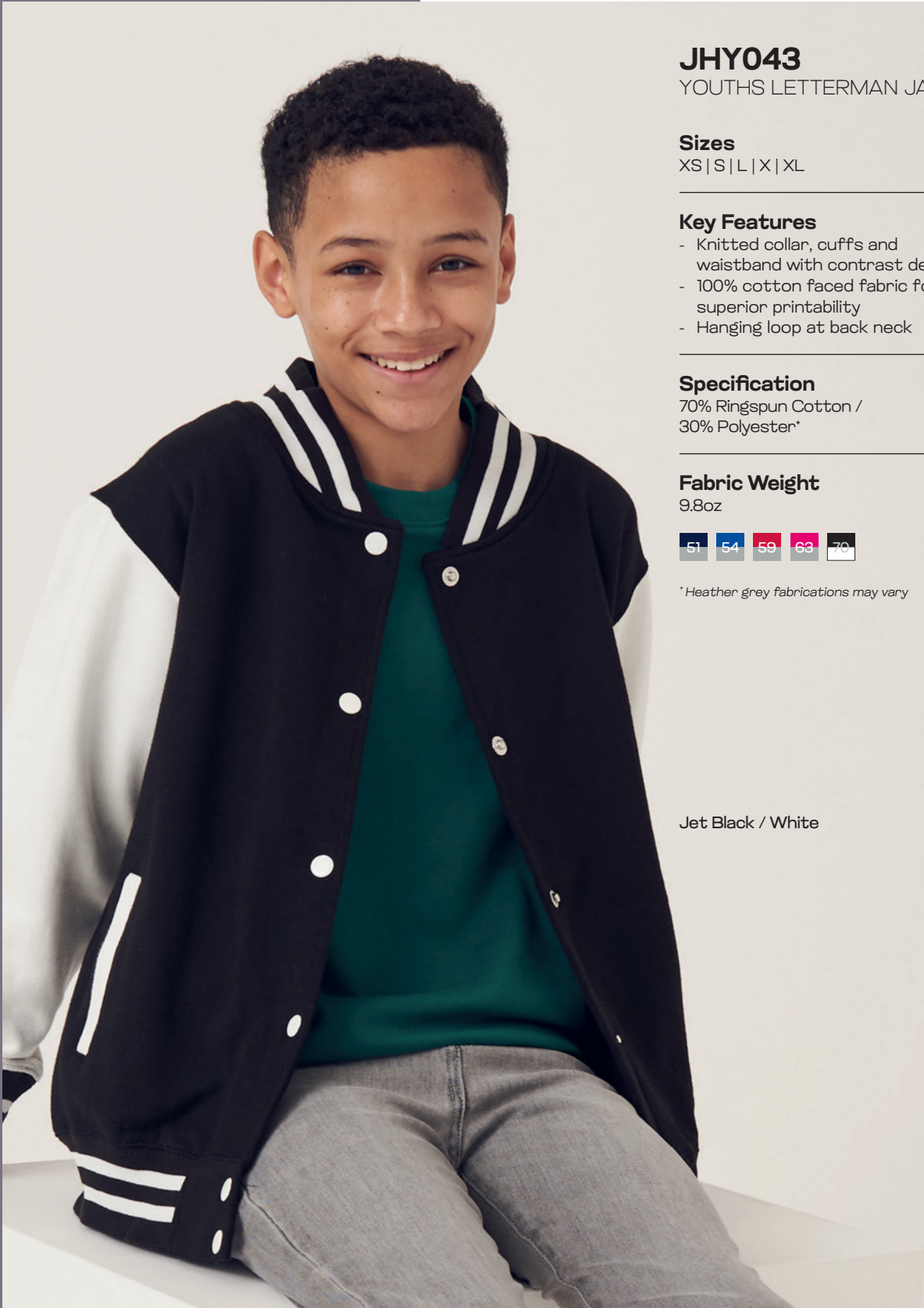
8.3oz



* Heather grey and charcoal fabrications may vary



Fire Red /
Arctic White



JHY043

YOUTHS LETTERMAN JACKET

Sizes

XS | S | L | X | XL

Key Features

- Knitted collar, cuffs and waistband with contrast details
- 100% cotton faced fabric for superior printability
- Hanging loop at back neck

Specification

70% Ringspun Cotton /
30% Polyester*

Fabric Weight

9.8oz



* Heather grey fabrications may vary

Jet Black / White



Burgundy /
Heather Grey

JHA043

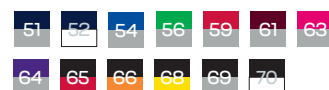
LETTERMAN JACKET

Sizes
S | M | L | XL | XXL | 3XL

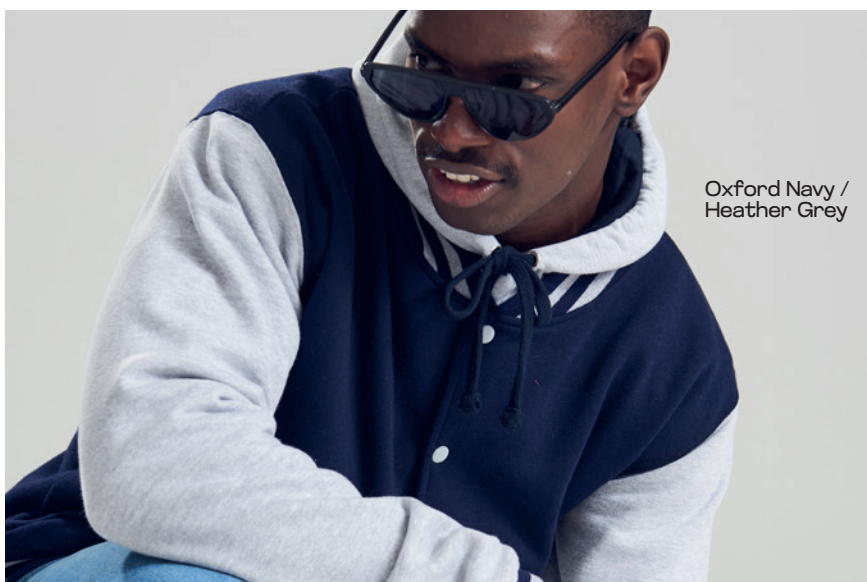
- Key Features**
- Knitted collar, cuffs and waistband with contrast details
 - 100% cotton faced fabric for superior printability
 - Contrast pocket detail

Specification
70% Ringspun Cotton / 30% Polyester*

Fabric Weight
9.8oz



* Heather grey fabrications may vary



Oxford Navy /
Heather Grey

JHA046

SOPHOMORE 1/4 ZIP SWEAT

Sizes

S | M | L | XL | XXL | 3XL

Key Features

- Metal YKK zipper and puller
- 100% cotton faced fabric for superior printability
- Relaxed fit

Specification

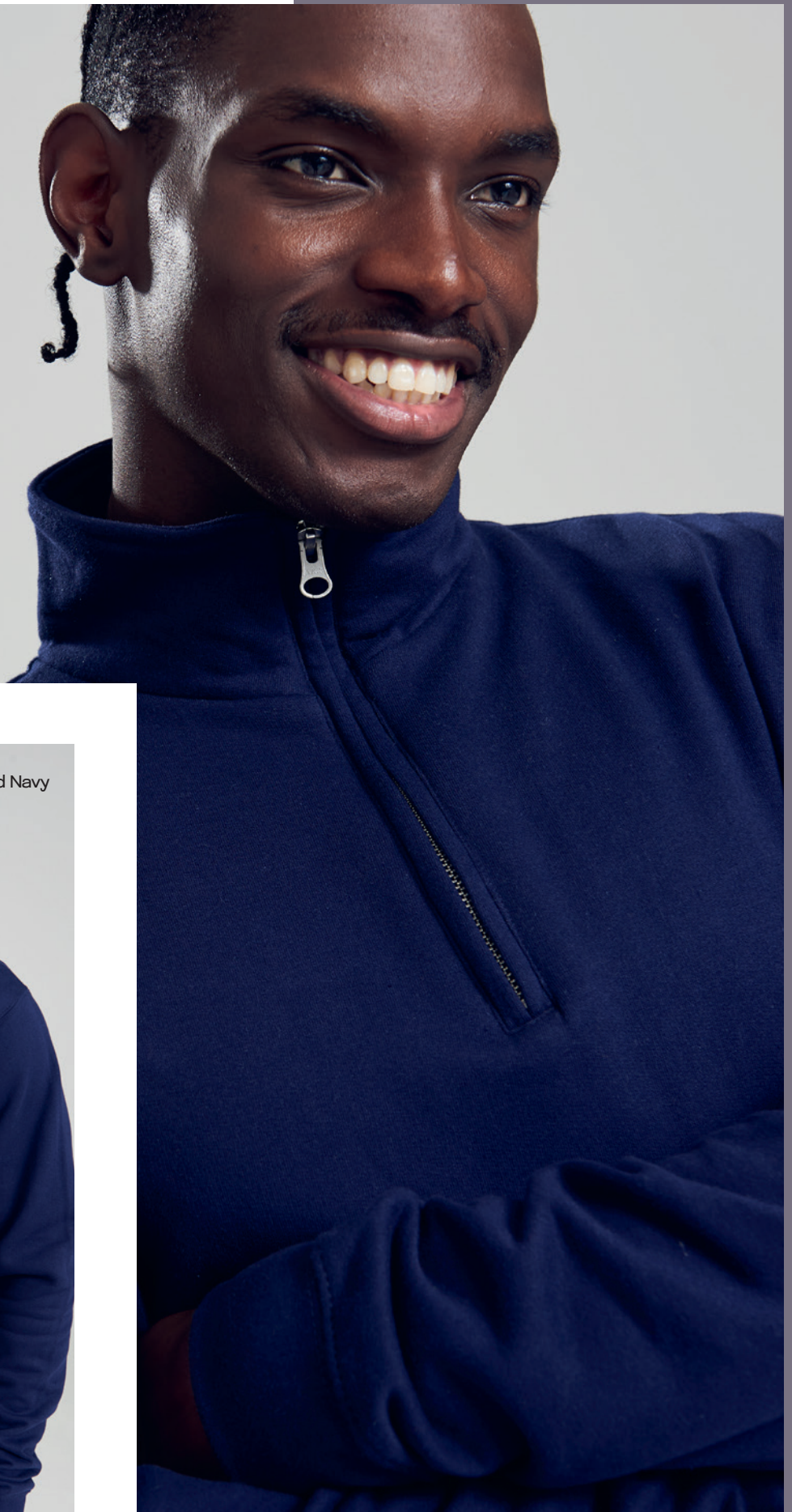
80% Ringspun Cotton /
20% Polyester*

Fabric Weight

8.3oz

2 44 91

* Charcoal fabrications may vary



Oxford Navy

Heather Grey /
Jet Black

JHA009

BASEBALL HOODIE

Sizes

S | M | L | XL | XXL | 3XL

Key Features

- Raglan sleeves
- 100% cotton faced fabric for superior printability
- Contrast hood, sleeve and drawcords

Specification

80% Ringspun Cotton /
20% Polyester*

Fabric Weight

8.3oz

65 72 75



* Heather grey and charcoal fabrications may vary





FASHION

Step into a world where fashion meets creativity! Perfect for everyday wear or making a statement, these printable garments are designed for those who want to express their individuality without sacrificing style.

JHA016 Dusty Pink **Page 49**

JHA014 Grey Camo **Page 43**



Oxford Navy

Jet Black

JHA021
CROSS NECK HOODIE

Sizes
S | M | L | XL | XXL | 3XL

- Key Features**
- Three panel double fabric hood
 - Flat lace drawcords
 - Thumb holes in cuff

Specification
70% Ring spun Cotton / 30% Polyester*

Fabric Weight
9.8oz

2 10 43 44 89

* Heather grey fabrications may vary

JHA011

EPIC PRINT HOODIE

Sizes

S | M | L | XL | XXL | 3XL

Key Features

- No pocket for maximum print surface area
- Flat lace drawcords
- 100% cotton faced fabric for superior printability

Specification

80% Ringspun Cotton / 20% Polyester

Fabric Weight

8.3oz

44

Jet Black





JHA014

CAMO HOODIE

Sizes

S | M | L | XL | XXL | 3XL

Key Features

- Relaxed fit
- Flat lace drawcords
- Soft cotton face for maximum printability

Specification

70% Ringspun Cotton /
30% Polyester

Fabric Weight

8.3oz



Grey Camo



Surf
Ocean

Surf Pink

JHA017

SURF HOODIE

Sizes

S | M | L | XL | XXL | 3XL

Key Features

- Melange effect fabric
- High cotton content fabric for superior printability
- Relaxed fit

Specification

80% Ring spun Cotton /
20% Polyester

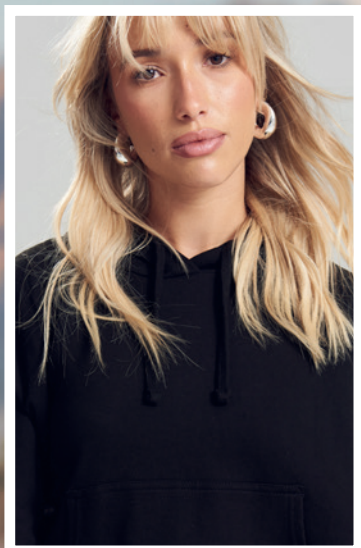
Fabric Weight

8.3oz

80 81 82 83 84

TRENDING HOODIES

CHECK OUT OUR WOMEN'S CROPPED HOODIE AND OUR CAMO HOODIE



Electric Yellow



JHA004

ELECTRIC HOODIE

Sizes
S | M | L | XL | XXL | 3XL

- Key Features**
- Neon electric colors
 - Brushed inner fleece
 - Flat lace drawcords

Specification
85% Polyester / 15% Ring spun Cotton

Fabric Weight
8.3oz

77 79

Electric Orange



JHY004

YOUTHS ELECTRIC HOODIE

Sizes
XS | S | M | L | XL

- Key Features**
- Neon electric colors
 - No drawcords
 - Brushed inner fleece

Specification
85% Polyester / 15% Ring spun Cotton

Fabric Weight
8.3oz

77 79

NEW

Electric Yellow

JHA035

WOMEN'S CROPPED SWEAT

Sizes

XS | S | M | L | XL

Key Features

- Cropped cut with drop shoulder design
- Raw edge hem with cover stitching
- 100% cotton faced fabric for superior printability

Specification

80% Ringspun Cotton / 20% Polyester*

Fabric Weight

8.3oz

42 44 47 89

* Heather grey fabrications may vary

Dusty Pink



Jet Black

JHA016

WOMEN'S CROPPED HOODIE

Size:

XS | S | M | L | XL

Key Features

- Cropped cut with drop shoulder design
- Raw edge hem with cover stitching
- 100% cotton faced fabric for superior printability

Specification

80% Ringspun Cotton / 20% Polyester*

Fabric Weight

8.3oz

42 44 47 89

* Heather grey fabrications may vary





PERFORMANCE

Our sportswear is built to help you push your limits. Our goal is to provide garments that assist your performance while helping you stand out from the rest. Available in color, style and size options that leaves no team, or team member out.

JCA001 Peach Sorbet **Page 52**

JCA002 Hawaiian Blue **Page 54**



Peach Sorbet

Electric Green

JCA001
AWDIS COOL T

Sizes
S | M | L | XL | XXL | 3XL | 4XL | 5XL*

- Key Features**
- 32 bold colors
 - UPF 30+ UV Protection
 - Smooth performance fabric

Specification
100% Polyester

Fabric Weight
4.1oz

1	2	3	4	5	6	8
11	12	13	14	15	18	22
26	29	31	32	34	35	36
38	39	41	44*	47*	76	77
78	79	89	91			

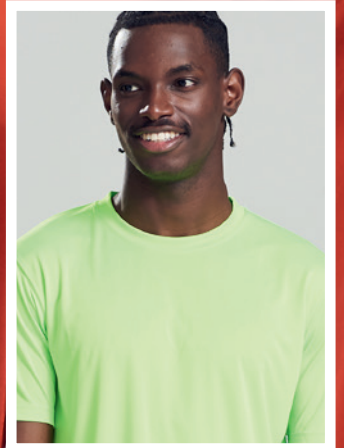
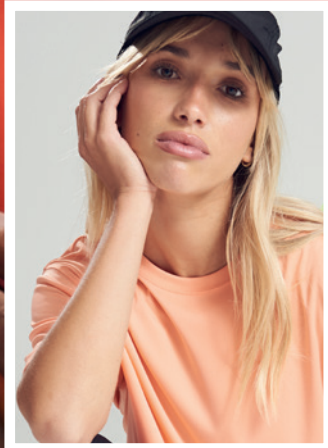
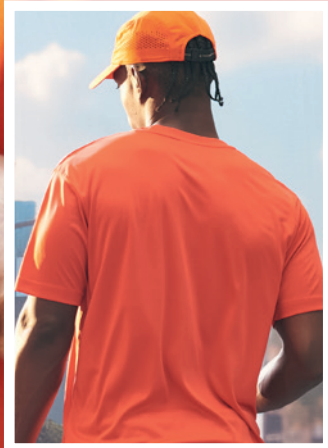
* Only certain colors are available in 4XL and 5XL

32

BOLD
COLORS



Fire Red



JCA002

LONG SLEEVE COOL T

Sizes

S | M | L | XL | XXL | 3XL

Key Features

- Relaxed fit
- Smooth performance fabric
- UPF 30+ UV Protection

Specification

100% Polyester

Fabric Weight

4.1oz

1	3	5	8	11	26	29
35	47	44	77	79	91	

Mint

Sky Blue

JCY001

YOUTHS COOL T

Sizes

XS | S | M | L | XL

Key Features

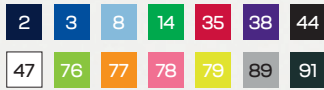
- Relaxed fit
- UPF 30+ UV Protection
- Smooth performance fabric

Specification

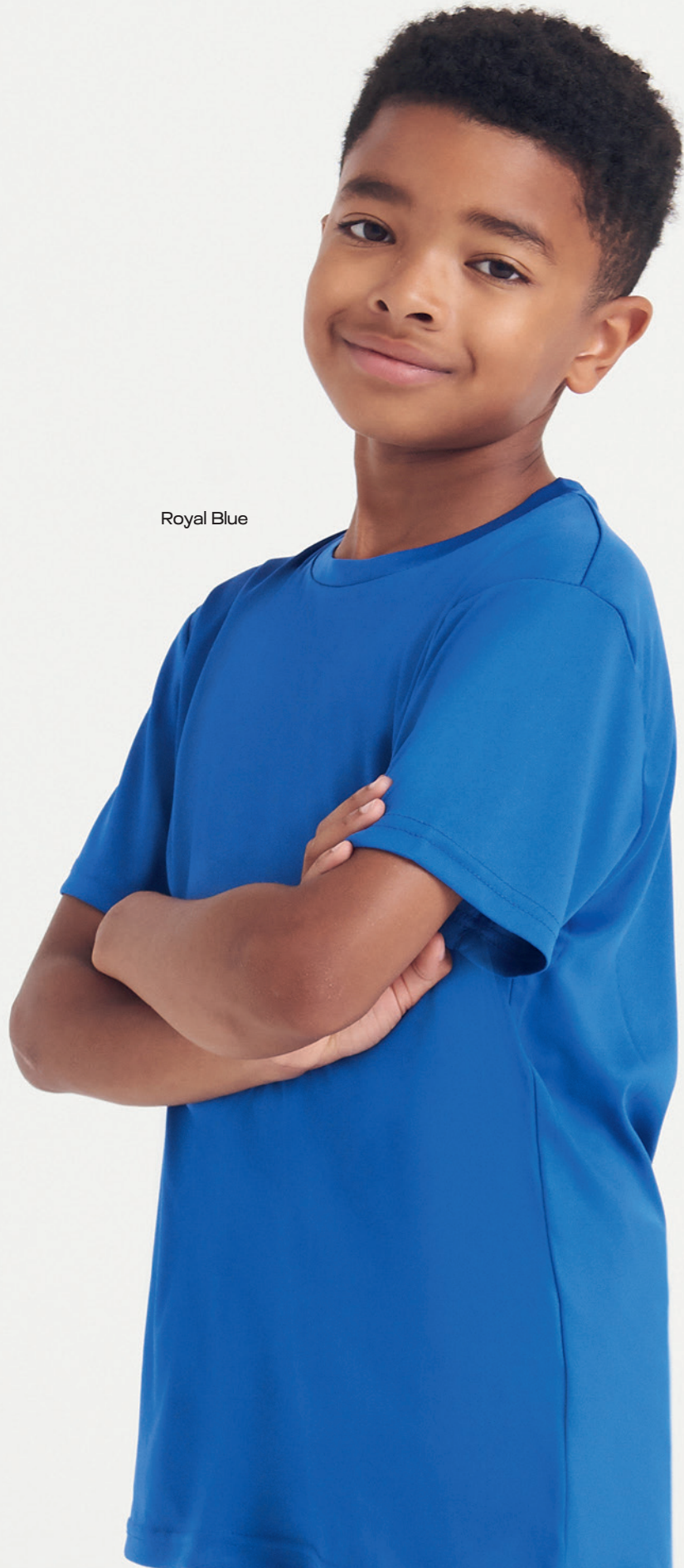
100% Polyester

Fabric Weight

4.1oz



Royal Blue



COLOR GUIDE

				
French Navy PMS 5395C	Oxford Navy PMS 533C	Royal Blue PMS 661C	Sapphire Blue PMS 300C	Hawaiian Blue PMS 2995C
				
Airforce Blue PMS 5405C	Cornflower Blue PMS 659C	Sky Blue PMS 644C	Seafoam PMS 16-4612 TCX	Peppermint PMS 3242C
				
Mint PMS 12-4608 TCX	Jade PMS 329C	Bottle Green PMS 554C	Kelly Green PMS 347C	Lime Green PMS 368C
				
Dusty Green PMS 16-5804 TCX	Earthy Green PMS 18-0420 TCX	Olive Green PMS 448C	Hot Chocolate PMS 440C	Caramel Toffee PMS 18-1031 TCX
				
Mocha Brown PMS 7531CP	Desert Sand PMS 7502C	Natural Stone PMS 15-0000 TCX	PFD (Prepared for Dye)	Nude PMS 4665C
				
Peach Sorbet PMS 15-1433 TCX	Vanilla Milkshake PMS 7499C	Sherbet Lemon PMS 120C	Sun Yellow PMS 109C	Mustard PMS 1245C
				
Gold PMS 136C	Orange Crush PMS 1505C	Burnt Orange PMS 173C	Red Hot Chilli PMS 1945C	Fire Red PMS 200C
				
Burgundy PMS 7421C	Dusty Lilac PMS 18-3710 TCX	Purple PMS 2617C	Magenta Magic PMS 258C	Lavender PMS 2563C
				
Hot Pink PMS 214C	Dusty Pink PMS 500CP	Baby Pink PMS 1895C	Jet Black BLACK	Steel Grey PMS 425C



Moondust Grey
PMS 428CP



Arctic White
WHITE



French Navy / Fire Red
PMS 5395C / 200C



French Navy / Sky Blue
PMS 5395C / 644C



French Navy / Heather Grey
PMS 5395C / COOL GRAY 5C



Oxford Navy / Heather Grey
PMS 533C / COOL GRAY 5C



Oxford Navy / White
PMS 533C / WHITE



Royal Blue / Arctic White
PMS 661C / WHITE



Royal Blue / Heather Grey
PMS 661C / COOL GRAY 5C



Sky Blue / Arctic White
PMS 644C / WHITE



Kelly Green / Heather Grey
PMS 347C / COOL GRAY 5C



Kelly Green / Arctic White
PMS 347C / WHITE



Fire Red / Jet Black
PMS 200C / BLACK



Fire Red / Heather Grey
PMS 200C / COOL GRAY 5C



Fire Red / Arctic White
PMS 200C / WHITE



Burgundy / Heather Grey
PMS 7421C / COOL GRAY 5C



Burgundy / Charcoal
PMS 7421C / 447C



Hot Pink / Heather Grey
PMS 214C / COOL GRAY 5C



Purple / Heather Grey
PMS 2617C / COOL GRAY 5C



Jet Black / Fire Red
PMS BLACK / 200C



Jet Black / Orange Crush
PMS BLACK / 1505C



Jet Black / Gold
PMS BLACK / 136C



Jet Black / Sun Yellow
PMS BLACK / 109C



Jet Black / Heather Grey
PMS BLACK / COOL GRAY 5C



Jet Black / White
PMS BLACK / WHITE



Charcoal / Orange Crush
PMS 447C / 1505C



Charcoal / Jet Black
PMS 447C / BLACK



Heather Grey / Fire Red
PMS COOL GRAY 5C / 200C



Heather Grey / French Navy
PMS COOL GRAY 5C / 5395C



Heather Grey / Jet Black
PMS COOL GRAY 5C / BLACK



Electric Green
PMS 13-0340 TN



Electric Orange
PMS XG ORANGE C



Electric Pink
PMS 16-1735 TPC



Electric Yellow
PMS 13-0630 TN



Surf Blue
PMS 2121C



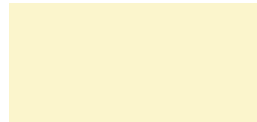
Surf Ocean
PMS 2225C



Surf Pink
PMS 495C



Surf Purple
PMS 530C



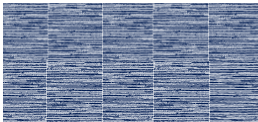
Surf Yellow
PMS 7499C



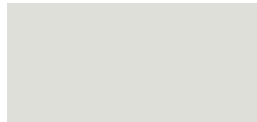
Green Camo



Grey Camo



Navy Melange
PMS 2965C



Ash
PMS COOL GRAY 2 UP



Heather Grey
COOL GRAY 5C



Graphite Heather
PMS 18-0503 TCX











Charcoal
PMS 447C



Black Smoke
PMS 447CP

FABRIC GUIDE

			
<p>College</p> <p>80% Ringspun Cotton, 20% Polyester</p> <p>8.3oz</p> <p>JHA001/Y, JHA003, JHA009, JHA011, JHA016, JHA030/Y, JHA035, JHA046, JHA050, JHA074, JHA080</p>	<p>Camo</p> <p>70% Ringspun Cotton, 30% Polyester</p> <p>8.3oz</p> <p>JHA014</p>	<p>Surf</p> <p>80% Ringspun Cotton, 20% Polyester</p> <p>8.3oz</p> <p>JHA017</p>	<p>Street</p> <p>70% Ringspun Cotton, 30% Polyester</p> <p>9.8oz</p> <p>JHA021, JHA043/Y</p>

			
<p>10oz</p> <p>70% Ringspun Cotton, 30% Polyester</p> <p>10oz</p> <p>JHA101</p>	<p>Electric</p> <p>85% Polyester, 15% Ringspun Cotton</p> <p>8.3oz</p> <p>JHA004/Y</p>	<p>Neoteric Smooth</p> <p>100% Polyester</p> <p>4.1oz</p> <p>JCA001/Y, JCA002</p>	<p>Cotton Midweight</p> <p>100% Combed Ringspun Cotton</p> <p>5.3oz</p> <p>JTA001</p>

PRINT GUIDE

WE ARE PRINT

Printability is in the fibers of everything we do.

Whether it's our college fabric with a smooth 100% ringspun cotton face or our 8.3oz combed and ringspun cotton jersey, we prioritize providing the perfect canvas for your chosen decoration technique.

Discover valuable insights and top tips in our online Print Guides.

Please visit our website for more information.



FIT GUIDE

THIS GUIDE REFERS TO BODY MEASUREMENTS. FOR SPECIFIC STYLE MEASUREMENTS PLEASE USE INDIVIDUAL BRAND STYLE SPECS

To Fit measurements are a guide only. To Fit measurements are body measurements. Brand measurements are garment measurements. Each brand has specialised measurements per style therefore fit will vary depending on brand and styling. A size M will be able to wear a size M across all brands however fit will vary depending on the style of the garment. Please see Brands spec sheets for specific garment measurements.

MEN'S / UNISEX CLOTHING

	XS	S	M	L	XL	XXL	3XL	4XL	5XL
TO FIT CHEST INCHES	34	36	40	44	48	52	56	60	62
TO FIT CHEST CM	86	91	101	111	121	132	142	152	157
TO FIT WAIST INCHES	28 - 30	30 - 32	32 - 34	34 - 36	36 - 38	38 - 40	40 - 42	42 - 44	44 - 46
TO FIT WAIST CM	71 - 76	76 - 81	81 - 86	86 - 91	91 - 96	96 - 101	101 - 106	106 - 111	111 - 116

INTERNATIONAL SIZES	XS	S	M	L	XL	XXL	3XL	4XL	5XL
FRENCH	40	42	44	46	48	50	52	54	56
ITALIAN	44	46	48	50	52	54	56	58	60
GERMAN	32	33	34	36	38	40	42	44	46
NETHERLANDS	32	33	34	36	38	40	42	44	46
SPAIN	40	42	44	46	48	50	52	54	56

WOMEN'S CLOTHING

	8	10	12	14	16
	XS	S	M	L	XL
TO FIT WAIST INCHES	24 - 26	26 - 28	28 - 30	30 - 32	32 - 34
TO FIT WAIST CM	61 - 66	66 - 71	71 - 76	76 - 81	81 - 86

INTERNATIONAL SIZES	8	10	12	14	16
FRENCH	36	38	40	42	44
ITALIAN	40	42	44	46	48
GERMAN	34	36	38	40	42
NETHERLANDS	34	36	38	40	42
SPAIN	36	38	40	42	44

CHILDREN'S CLOTHING

	XS	S	M	L	XL
CHEST	26"	28"	30"	32"	34"
AGE	3 - 4	5 - 6	7 - 8	9 - 11	12 - 13
HEIGHT (CM)	102	114	126	138	150

INTERNATIONAL SIZES	XS	S	M	L	XL
CHEST	26"	28"	30"	32"	34"
AGE	3 - 4	5 - 6	7 - 8	9 - 11	12 / 13
HEIGHT (CM)	98 - 104	110 - 116	122 - 128	134 - 146	152 - 158

INTERNATIONAL SIZE GUIDES

MEN

SIZE	UK	FR	DE	NL	ES	IT	USA
XS	XS	40	32	32	40	44	34
S	S	42	33	33	42	46	36
M	M	44	34	34	44	48	38
L	L	46	36	36	46	50	40
XL	XL	48	38	38	48	52	42
2XL	2XL	50	40	40	50	54	44
3XL	3XL	52	42	42	52	56	46
4XL	4XL	54	44	44	54	58	48
5XL	5XL	56	46	46	56	60	50

WOMEN

SIZE	UK	FR	DE	NL	ES	IT	USA
XS	8	36	34	34	36	40	4
S	10	38	36	36	38	42	6
M	12	40	38	38	40	44	8
L	14	42	40	40	42	46	10
XL	16	44	42	42	44	46	12

KIDS

SIZE	AGE	HEIGHT
XS	3/4 years	98-104cm
S	5/6 years	110-116cm
M	7/8 years	122-128cm
L	9/11 years	134-146cm
XL	12/13 years	152-158cm





46
Moondust Grey



47
Arctic White



48
French Navy /
Fire Red



49
French Navy /
Sky Blue



50
French Navy /
Heather Grey



51
Oxford Navy /
Heather Grey



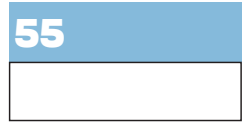
52
Oxford Navy /
White



53
Royal Blue /
Arctic White



54
Royal Blue /
Heather Grey



55
Sky Blue /
Arctic White



56
Kelly Green /
Heather Grey



57
Kelly Green /
Arctic White



58
Fire Red /
Jet Black



59
Fire Red /
Heather Grey



60
Fire Red /
Arctic White



61
Burgundy /
Heather Grey



62
Burgundy /
Charcoal



63
Hot Pink /
Heather Grey



64
Purple /
Heather Grey



65
Jet Black /
Fire Red



66
Jet Black /
Orange Crush



67
Jet Black /
Gold



68
Jet Black /
Sun Yellow



69
Jet Black /
Heather Grey



70
Jet Black /
White



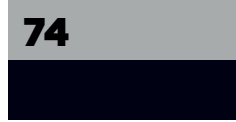
71
Charcoal /
Orange Crush



72
Charcoal /
Jet Black



73
Heather Grey /
Fire Red



74
Heather Grey /
French Navy



75
Heather Grey /
Jet Black



76
Electric Green



77
Electric Orange



78
Electric Pink



79
Electric Yellow



80
Surf Blue



81
Surf Ocean



82
Surf Pink



83
Surf Purple



84
Surf Yellow



85
Green Camo



86
Grey Camo



87
Navy Melange



88
Ash



89
Heather Grey



90
Graphite Heather



91
Charcoal



92
Black Smoke



f @AWDisUSA

@AWDisUSA

www.AWDisUSA.com